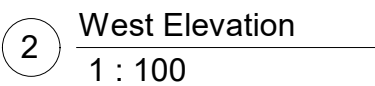
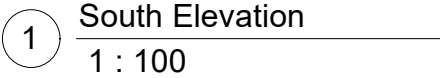


DESIGN INTENT DRAWINGS
NOT FOR CONSTRUCTION

<div>Disclaimer:</div> <div>Information shown on this drawing should be read in conjunction with the specification and BASIX certificate where applicable. Comply with relevant authorities requirement. Comply with Building Code of Australia requirements. Comply with relevant Australian Standards for materials and construction practice. All drawn information should be sufficient for a reasonably competent and experienced builder to understand the design intent. Should this be not the case, the Client should be informed immediately for clarification. Some elements shown in this drawing may be subject to further advice from consultants/sub-consultants other than the architect. It is the responsibility of the consultants/sub-consultants/builder, and not the architect, to ensure that the design intent is met satisfactorily.</div>	<div>Check all dimensions, site conditions and RL's against survey prior to commencement of any work, the purchase or ordering of any materials, fittings, plant, services or equipment and the preparation of shop drawings and or the fabrication of any components. Do not scale drawings - Any discrepancies discovered shall immediately be referred to the Client for clarification. Copyright remains with the JKMarchitects. The Client is licensed to use the documents and drawings to produce the project and site for which they were intended; provided that the JKMarchitects has completed the extent of works for which they were commissioned, and all fees due to the JKMarchitects has been paid.</div>	<div>Legend</div> <div><div><div><div></div></div><div>Site Boundary</div></div><div><div><div></div></div><div>Construction Area</div></div><div><div><div></div></div><div>Foundation</div></div><div><div><div></div></div><div>Reinforced Concrete</div></div><div><div><div></div></div><div>Water Feature/Ponding</div></div><div><div><div></div></div><div>Wetland Vegetation</div></div><div><div><div></div></div><div>Fencing</div></div><div><div><div></div></div><div>Footpath/Sidewalk</div></div><div><div><div></div></div><div>Paved Area/Bldg</div></div></div>	<div>Revision</div> <div><div><div>A</div><div>07.05.2022</div><div>For Information</div></div><div><div>B</div><div>14.06.2022</div><div>For Information</div></div><div><div>C</div><div>05.07.2022</div><div>For Information</div></div><div><div>D</div><div>15.07.2022</div><div>For Information</div></div><div><div>E</div><div>05.08.2022</div><div>For Information</div></div><div><div>F</div><div>16.11.2022</div><div>Development Application</div></div></div>	<div>Architect</div> <div><div><div>jkmarchitects</div></div><div>JKMarchitects Pty Ltd Suite 6.13 / 55 Miller Street, Pyrmont, NSW 2009. ABN 98 651 373 483</div></div> <div>Nominated Architect Tai Kei Keith Ma NSW 9247</div>	<div>Client.</div> <div>Peter Giurissevich</div>	<div>Project Name.</div> <div>Ashbury House</div> <div>Project Address</div> <div>3 AyR Street, Ashbury NSW 2193</div>	<div>Project No.</div> <div>2128</div>	<div>Status</div> <div>Development Application</div>
			<div>Scale</div> <div>1: 100 @ A3</div> <div>0 1000 2000 3000 mm</div>	<div>Sheet Name</div> <div>Proposed Elevations</div>	<div>Drawing no.</div> <div>DA03.00</div>	<div>Revisions</div> <div>F</div>		



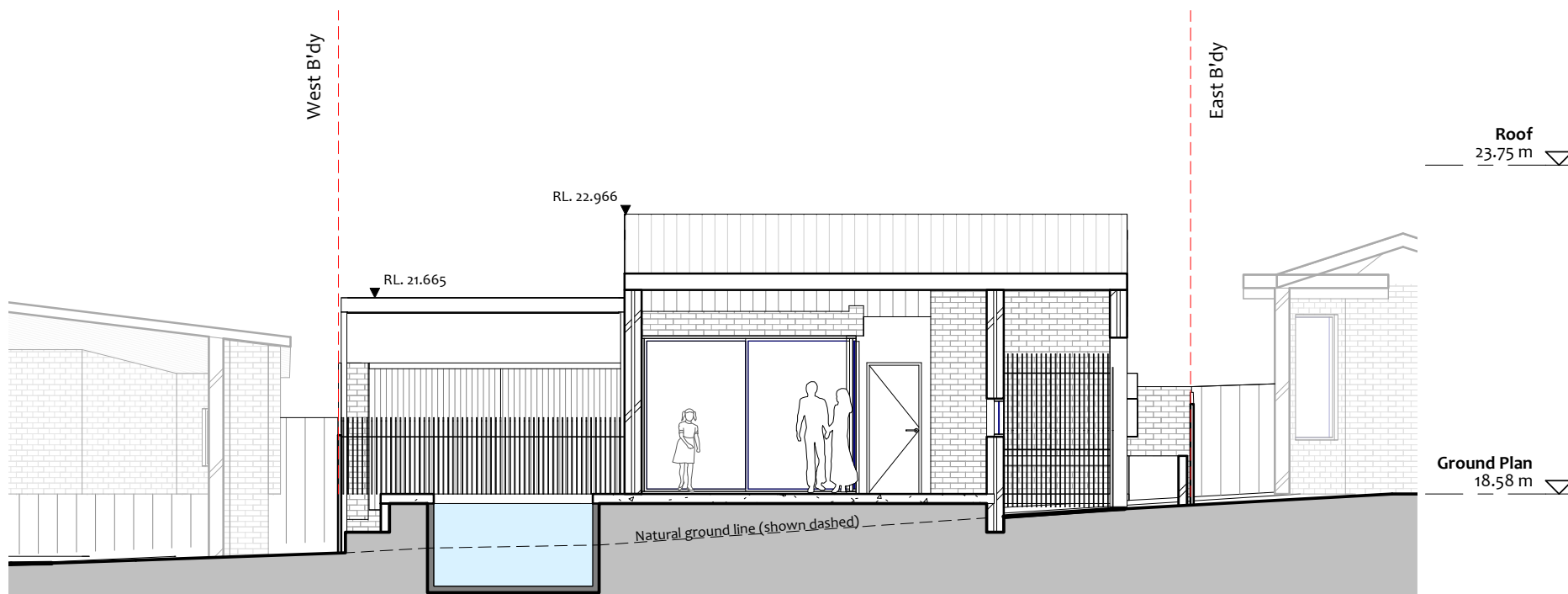
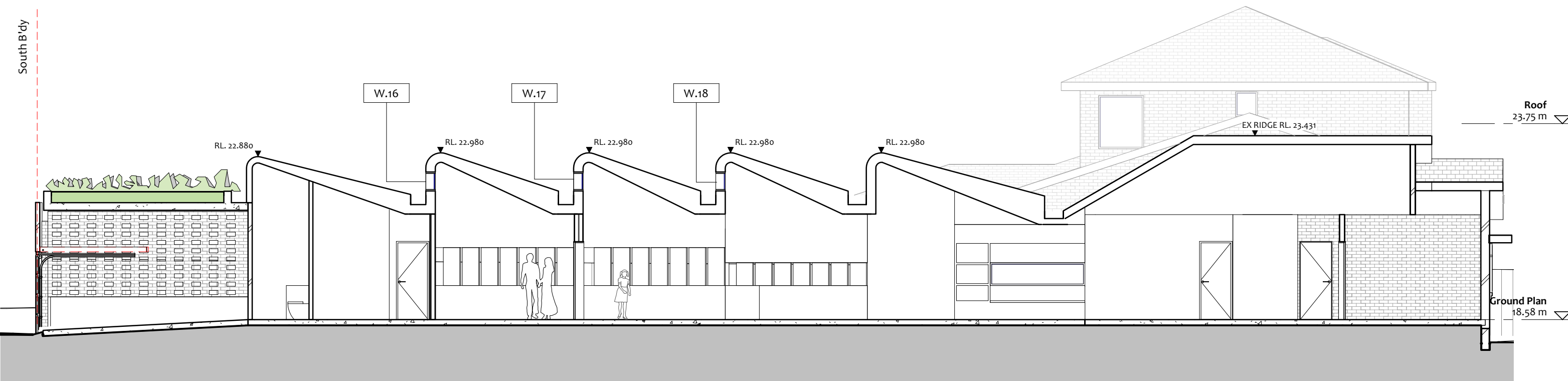
DESIGN INTENT DRAWINGS
NOT FOR CONSTRUCTION

Status
Development Application

Scale
1: 100 @ A3

0 1000 2000 3000 mm

Revision F



DESIGN INTENT DRAWINGS
NOT FOR CONSTRUCTION